

EXECUTIVU



EXECUTIVE SUMMARY

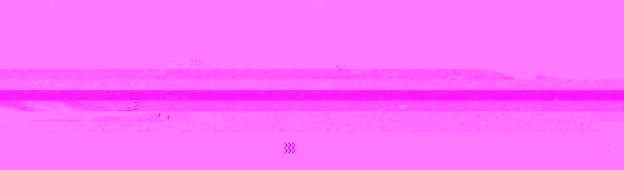
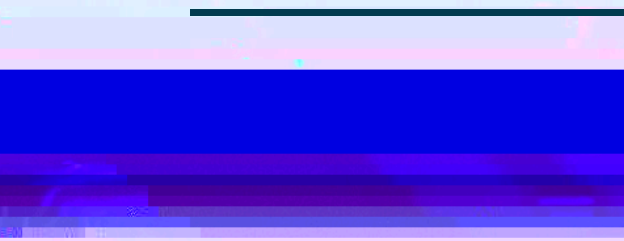
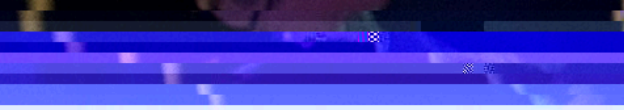
Joshua House Recovery Ministries is seeking a seasoned leader who is ready to tackle their next leadership challenge by helping transform the lives of men experiencing all forms of addiction.

Building on its twenty-year history, the Executive Director will provide vision, strategic direction and operational leadership to this faith-based, complex, multi-site organization. The Executive Director reports directly to the Joshua House Board of Directors and will collaborate with the board to ensure organizational effectiveness, excellence in service delivery and support of clients, and will take ownership in revitalizing this organization towards financial health and sustainability.

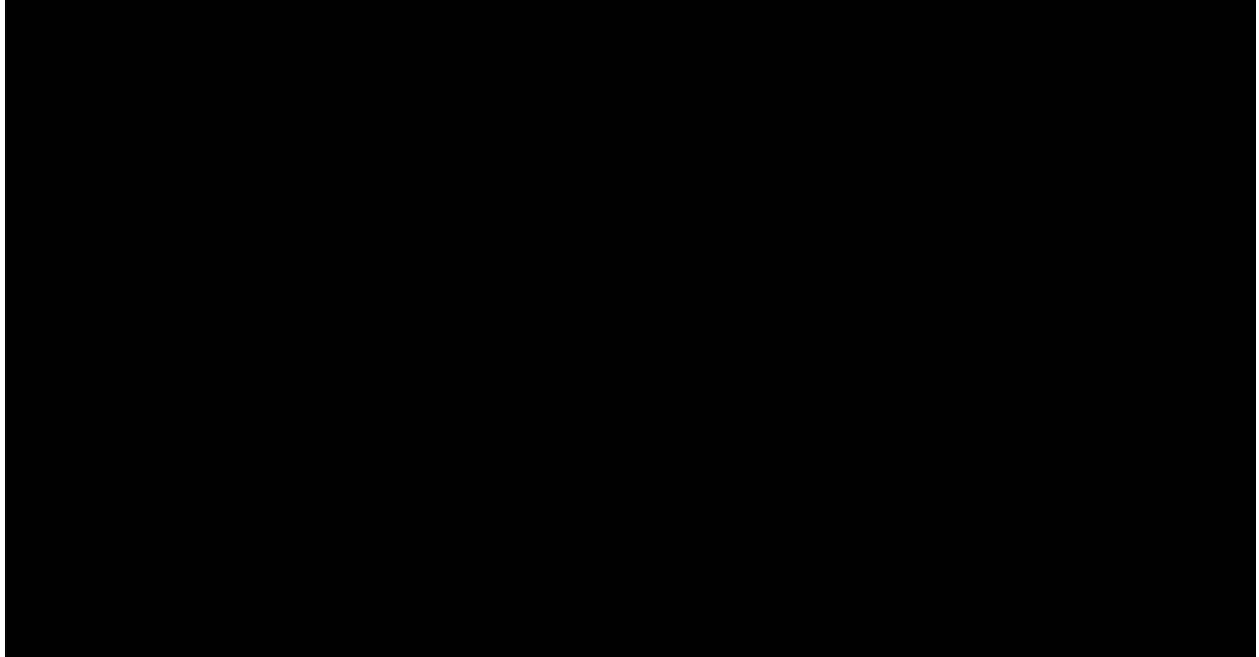
The Executive Director will bring a proven track record in fund development and will put a special emphasis on strengthening the brand, reputation and relationship building with key stakeholders, including high-net-worth donors, volunteers, partners and community members.

The Executive Director establishes and sustains a healthy workplace culture that facilitates the motivation and empowerment of others, mentors and develops organizational leaders and optimizes operations based on the current best-practices of a faith-based recovery ministry.

If you are aligned with Joshua Houses' vision, mission and values, are entrepreneurial, creative and have a heart and passion to see the lives of men transformed from addiction to recovery, we would love to connect with you.



HE JOB



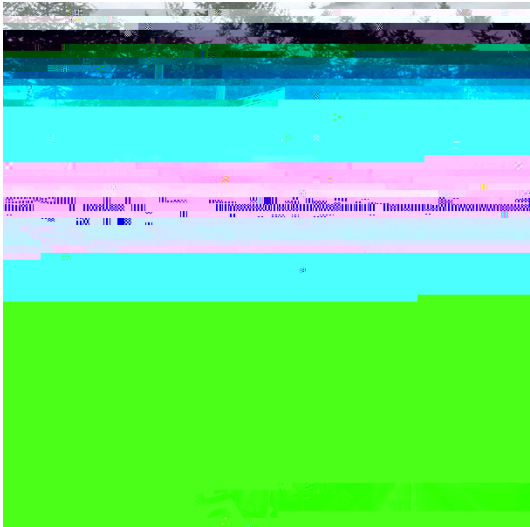
POSITION MMA

HZedg e\ 'id i] Z '@h] j V> dj hZ '8dVgY 'd[: gZxidgh"i] Z; nZxj i kZ: gZxidgd['@h] j V> dj hZ 'HZXdkZgn'C e' nigZ h' h'i] Z egb Vgn ZnZxj i kZ 'zVYZgd[i] Z b e' nig" VcY 'nigZ hedchWZ [dg] Zæ e\ 'h] VeZ VcY YZakZghigViZ\ X' b eZgVi kZh' [dgi] Z dg\ Vc' bVi 'dc' VcY ' h' b j a #\ Zd' deZgVi 'dch\$ I] Z; nZxj i kZ: gZxidg] Vh' egb Vgn gZhedchWZ h' n' [dgi] Z dg\ Vc' bVi 'dc h' [j cY YZkZæeb Zci" cVcXVab VcV\ Zb Zci"] j b Vc' gZhdj gZ h' VcY VæideZgVi 'dcVa b ViiZghid VZhi ' [j a æ' h' b' h' d' c\$

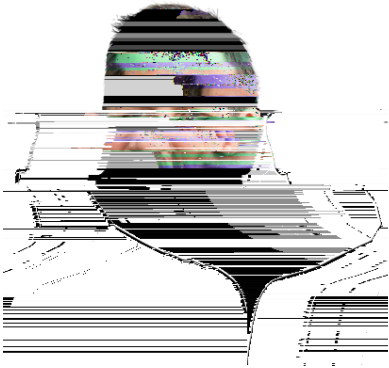
I ' b Z j hZQ- &/ ' [j cY YZkZæeb Zci" (&/ egd\ g/ b' deZgVi 'dch" &/ VYb e' nigVi kZ\$

KEY RESPONSIBILITIES

-
-
-
-
-
-
-
-
-



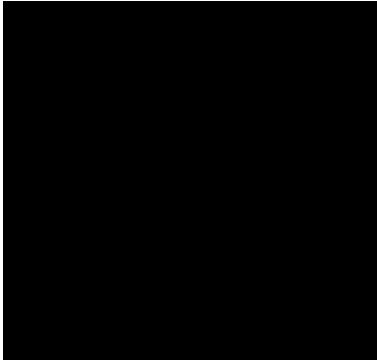
O R SEARCH EAM



SHAWN PLUMMER
LEADING THE SEARCH

shawn@nelsonandkraft.com
604.614.2665

S] VI c h V hZc dg ZnXj i kZ I] d" V[iZg ((nZVgh e eiZgcVi dcVa gZaZ[VcY YZkZadeb Zci" b dhi gZXZcian hZgkZY Vh FgzhYZci & 9; E d[<ddY [dgi] Z Hj c\gn 9VcVYV\$Hh XVgZg] Vh aZY id YZZe gZaVi dch] eh VcY gZheZXI I ↑] e] h WgVY cZil dg d[cdc#egd[↑h VcY Wj h cZhhZh \adVWan VcY VXgdhh 9VcVYV\$W↑] e kVj WZ egd\gVb VcY aZVYZgh] e ZneZgZcXZ" V] hidgn d[b VcV\ e\ aVgZ iZVb h" VhI ZaahZgk e\ Vh V WdVgY b Zb WZg] b hZa" S] VI c hI Za Zfj eeZY id Xdb Z Vadc\hYZ ndj g dgVc bVi dc id Zchj g ndj] VkZ i] Z g\] i aZVYZgh] e iZVb e eaXZ id YgkZ ndj g [j ij gZ hj XXZhh\$



MARK KRAF
SUPPORTING THE SEARCH

mark@nelsonandkraft.com
778.982.4427

MVg h V ig hiZY VcY hdj \] i#V[iZg ZnXj i kZ hZVgX] aZVYZg' I ↑] dkZg (& nZVgh d[Xdb WcZY ZneZgZcXZ e i] Z ej WAX VcY egkViZ hZXidgh\$8gc\ e\ V YZZe akZa d[XVgZ VcY Xdb b ↑b Zci id] h XaZcih" MVg] Vh hj XXZhhj an aZY dkZg '&& ZnXj i kZ iVaZci hZVgX] Zh VXgdhh 9VcVYV" [dg gZah gVc\ e\ [gdb 9; E id 9<E" id 9E E \$W↑]] h WZVYi] VcY YZei] d[ZneZgZcXZ" MVg] Vh WZXdb Z V gZheZXiZY Wyk h dg VcY \d#d ZneZg [dg cdc#egd[↑" X] Vgtn" VcY [V↑] #WWhZY dgVc bVi dc hadd` e\ id hdj gXZ ide ZnXj i kZ iVaZci\$

Apply online at nelsonandkraft.com/jobs with your cover letter and resume. You must be eligible to work in Canada.

Nelson/Kraft & Associates Inc. is an executive consulting firm that specializes in working with not-for-profits and for-profit b